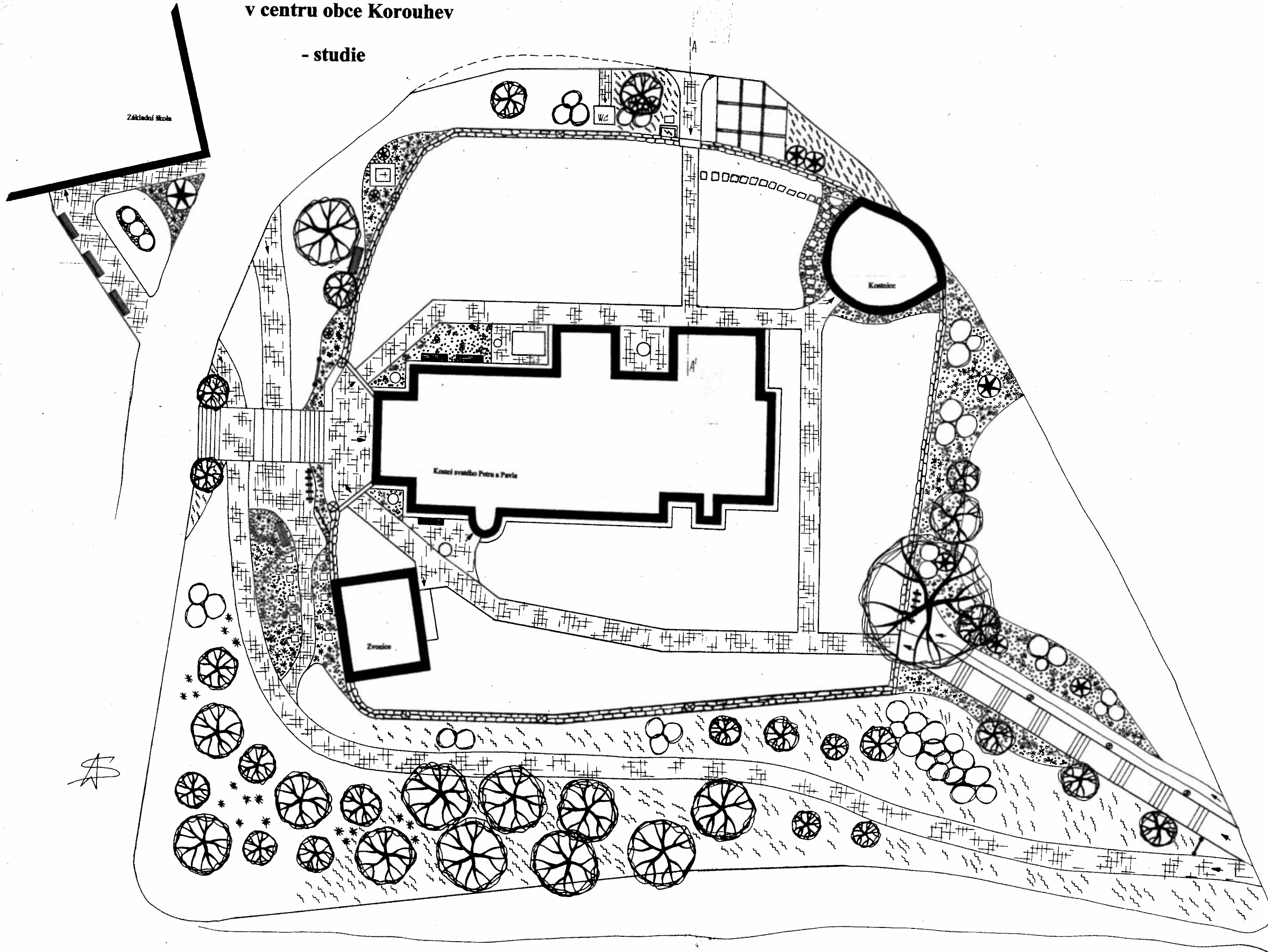


Revitalizace prostranství
v centru obce Korouhev

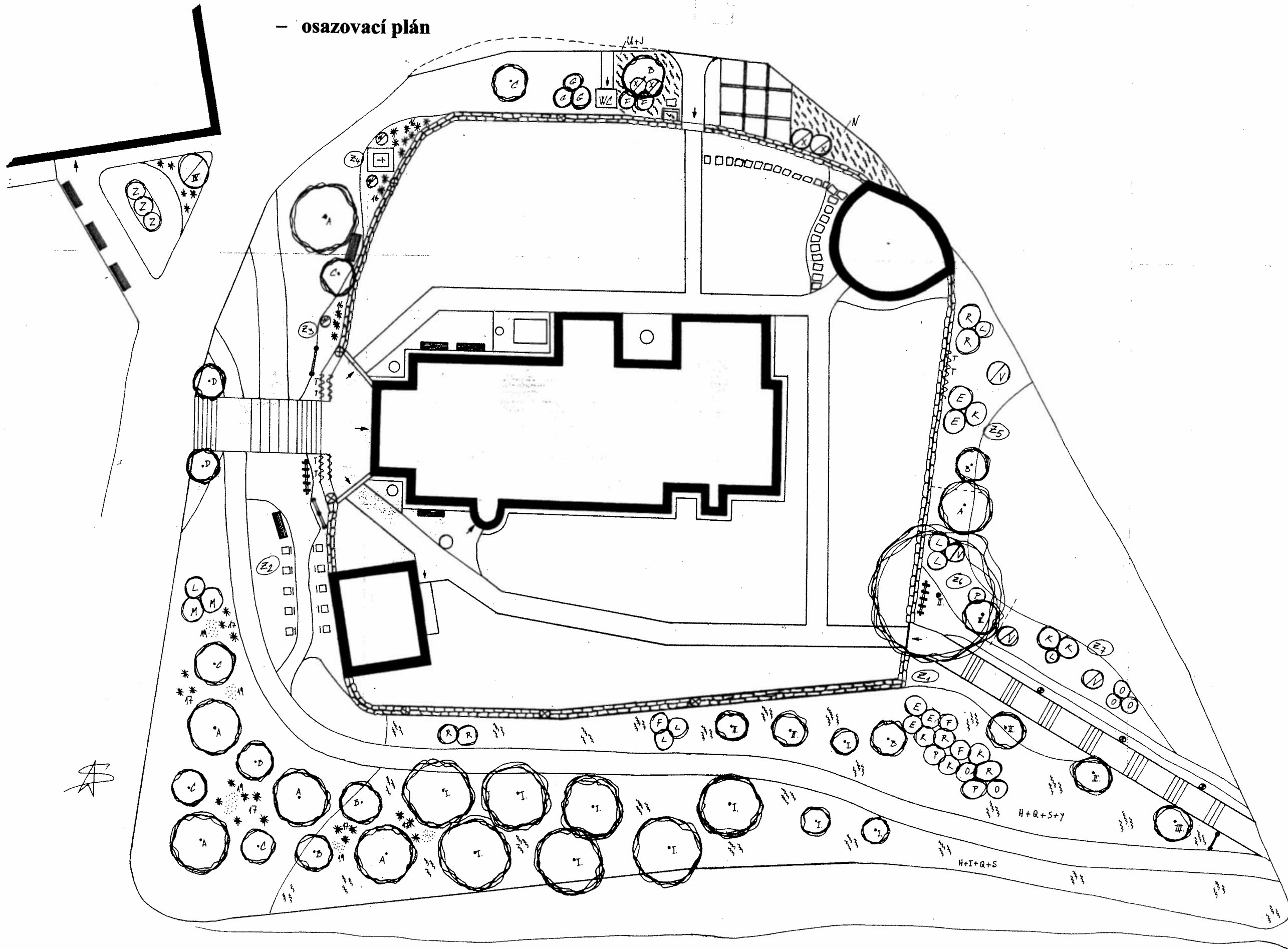
- studie



| | | |
|--|-------------|-----------|
| Revitalizace prostranství v centru obce Korouhev | | |
| Realizační dokumentace | | |
| Zadavatel: Obec Korouhev | | |
| Investor: Obec Korouhev | | |
| Výpracoval: Ing. Stanislava Bartošová | | |
| 1.6.2011 | číslo 1:100 | Obc. č. 1 |

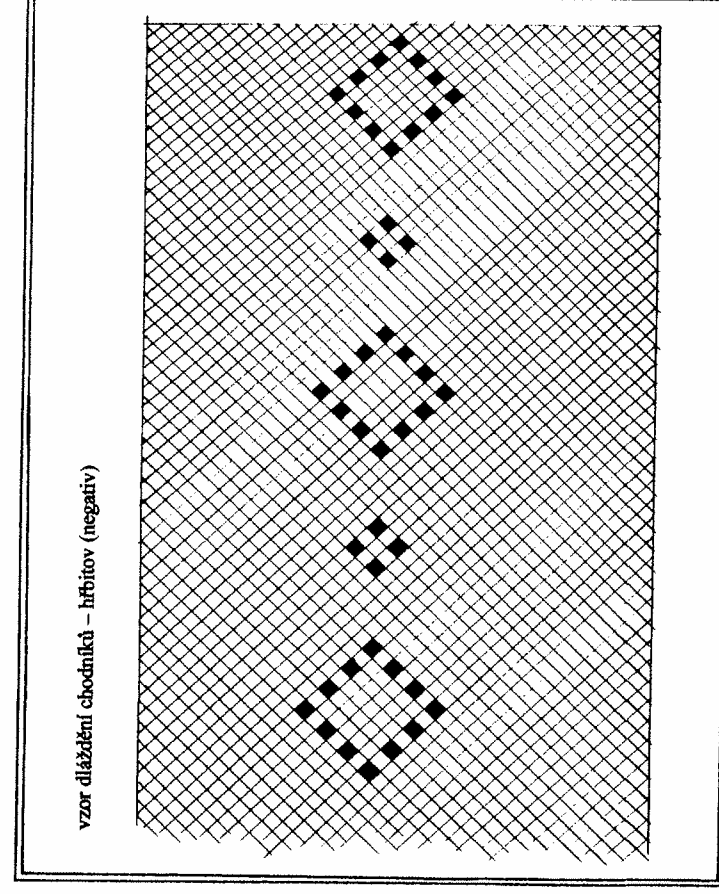
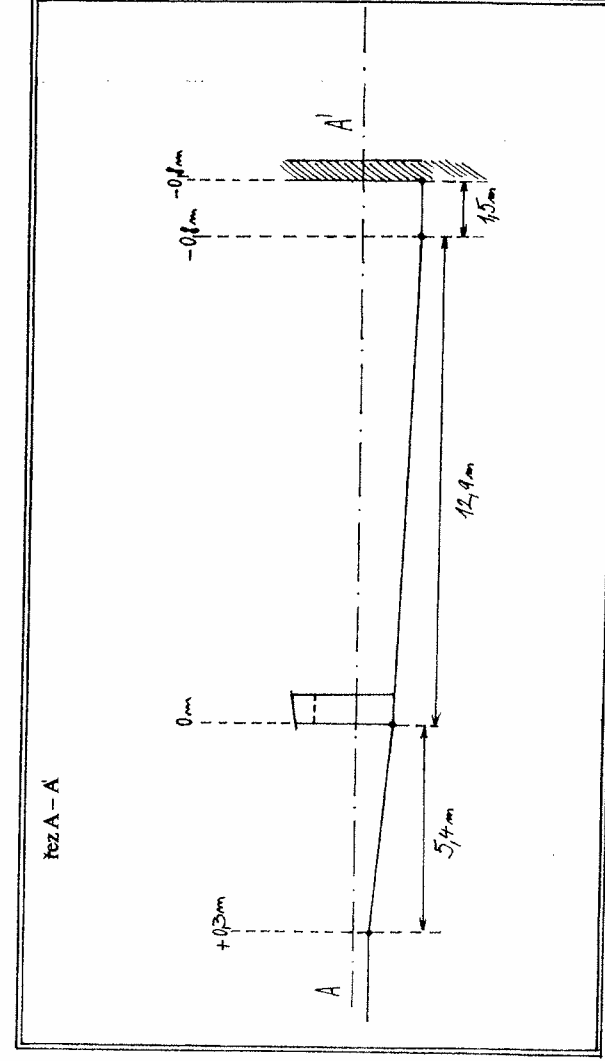
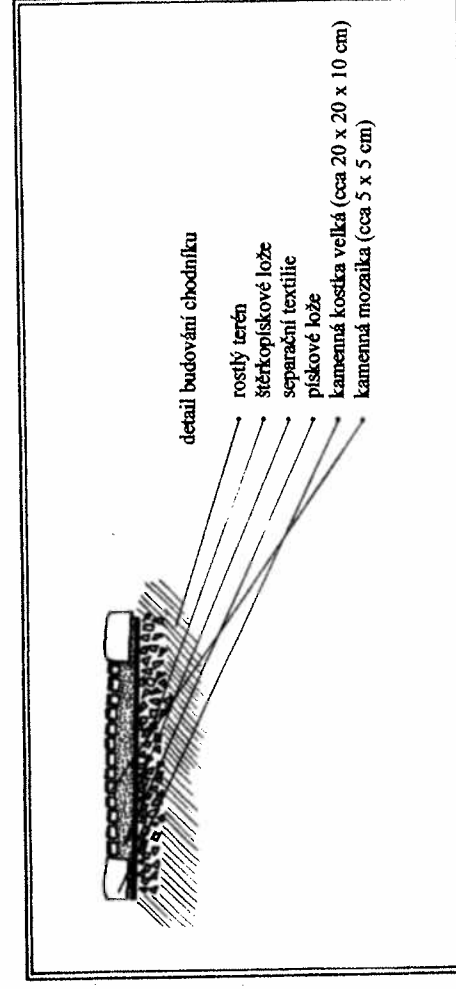
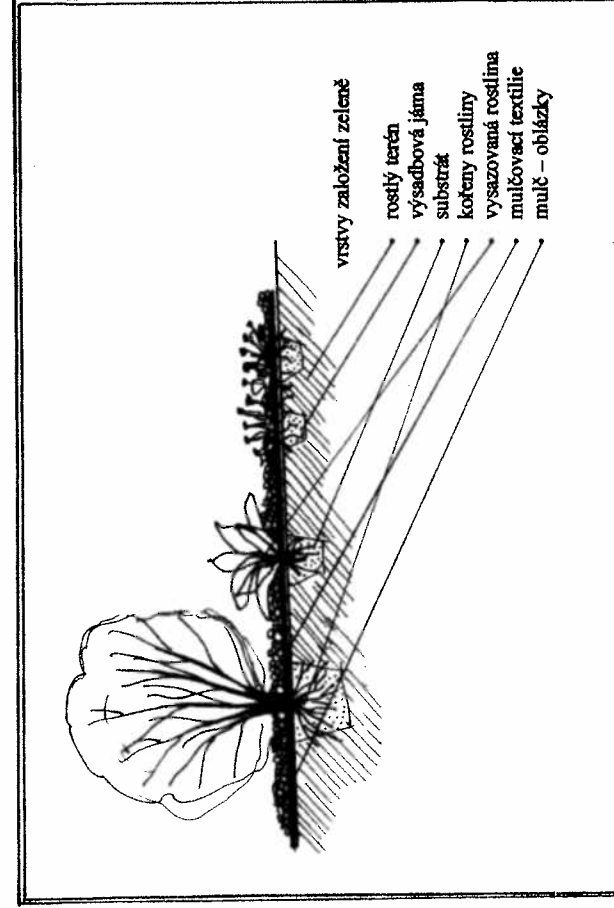
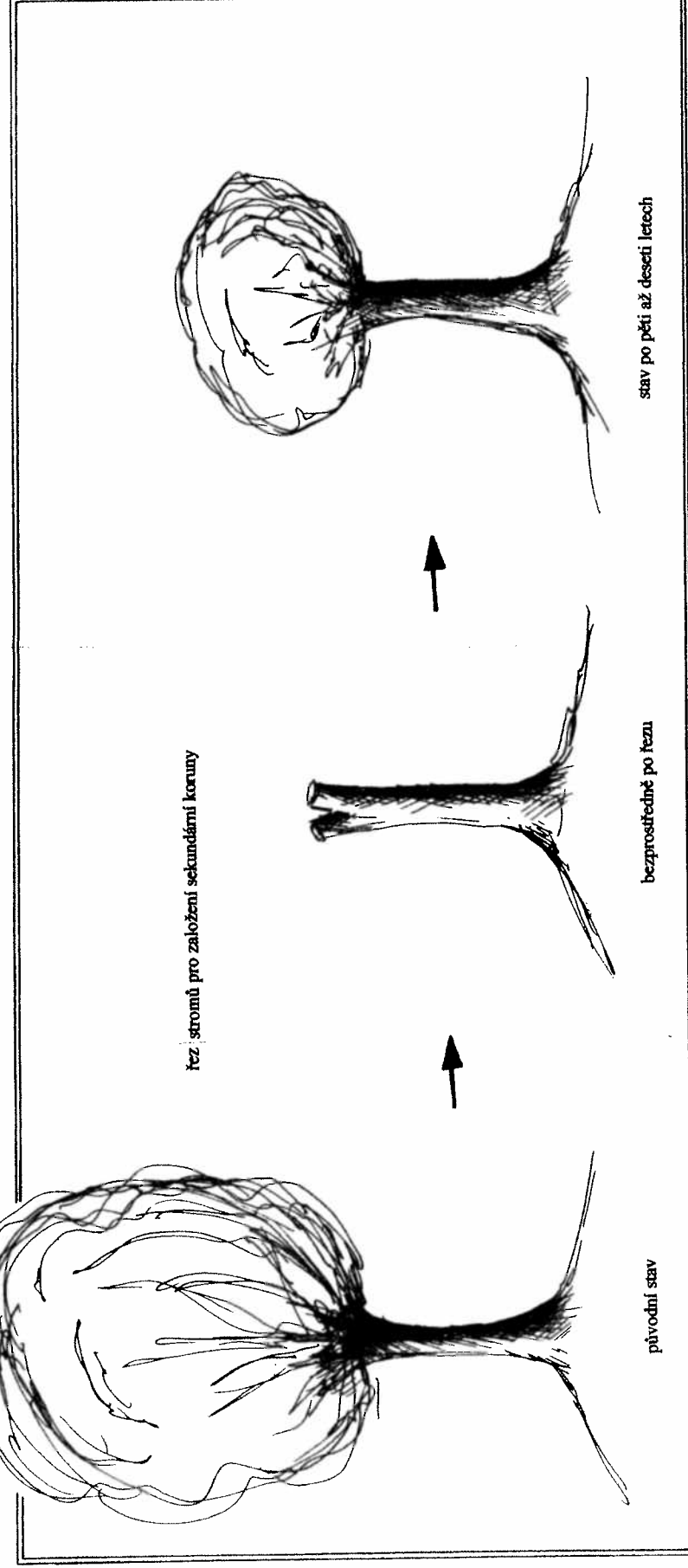
**Revitalizace prostranství
v centru obce Korouhev**

– osazovací plán



Revitalizace prostranství v centru obce Korouhev

- detaily řešení

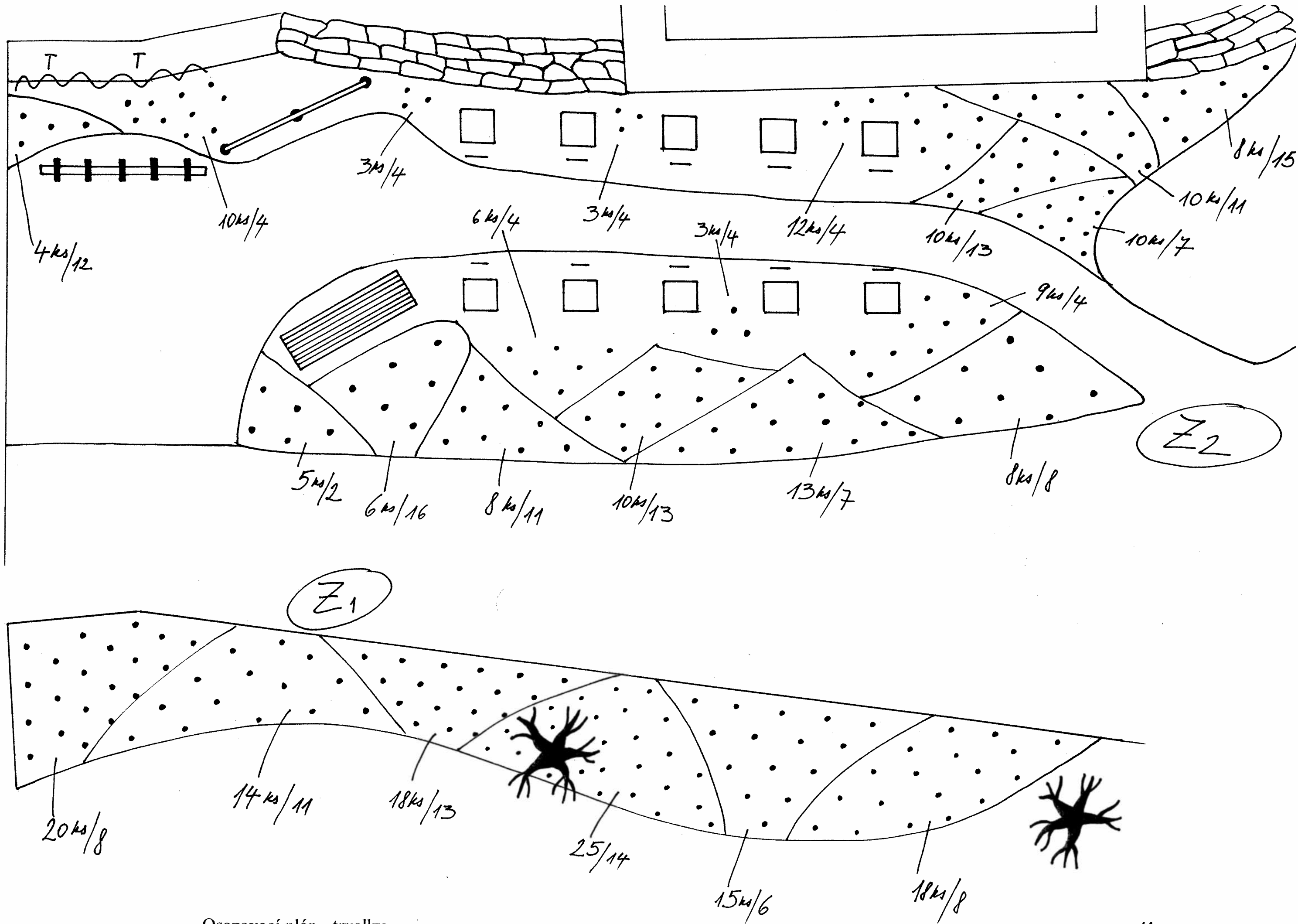




GEO PARK

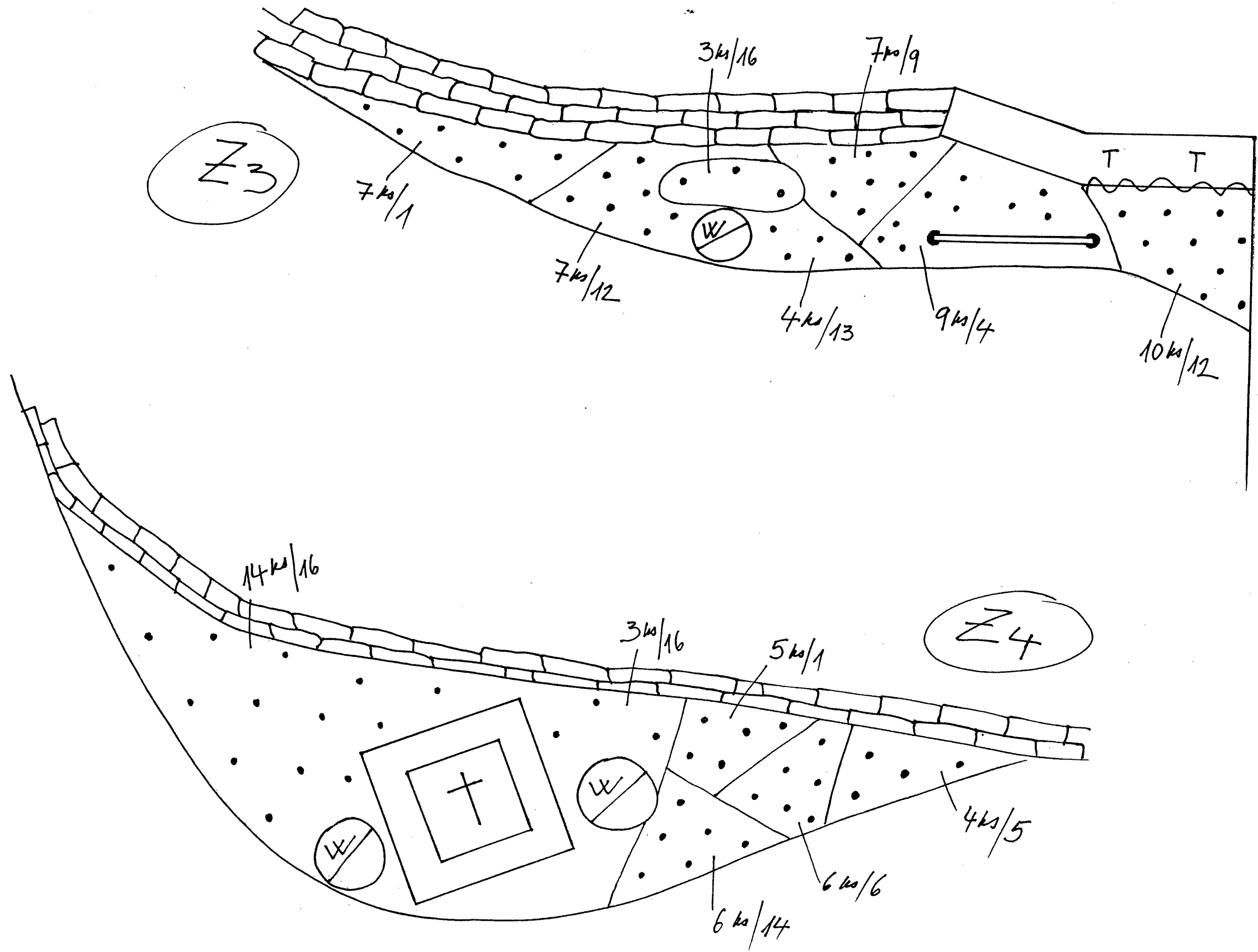


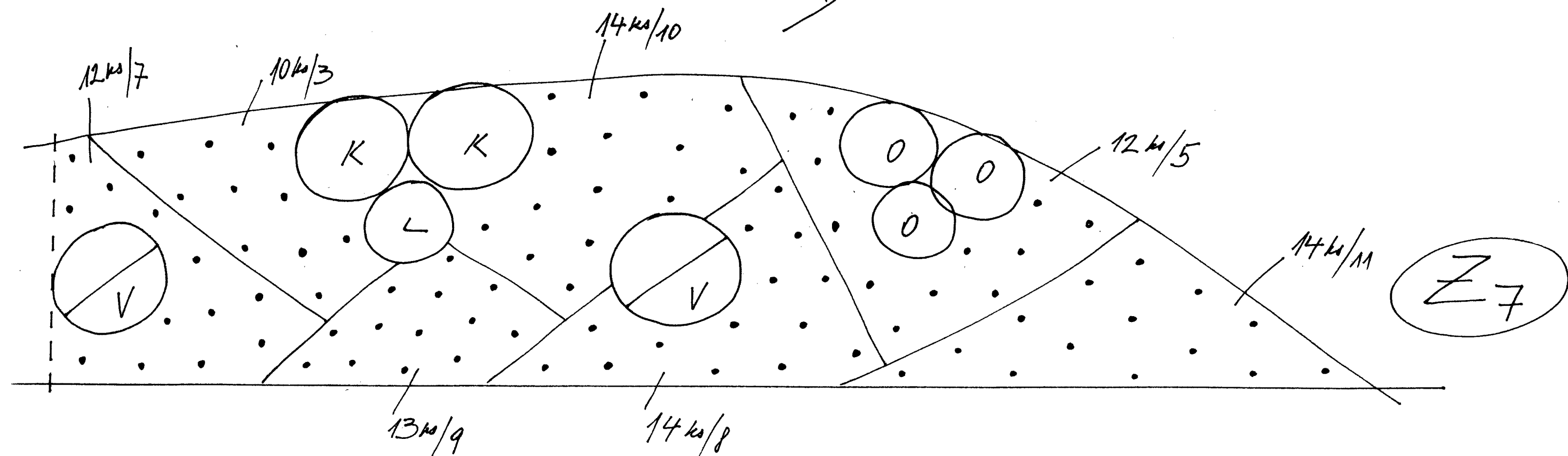
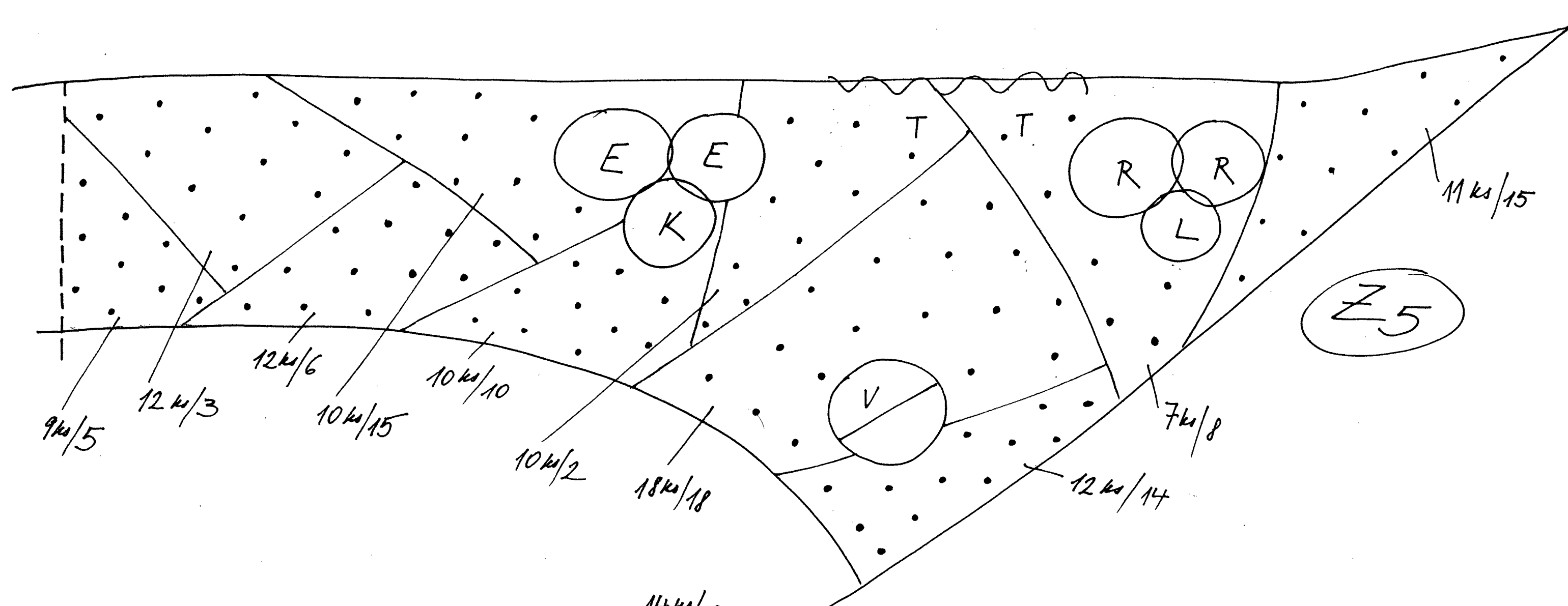
GEO PARK

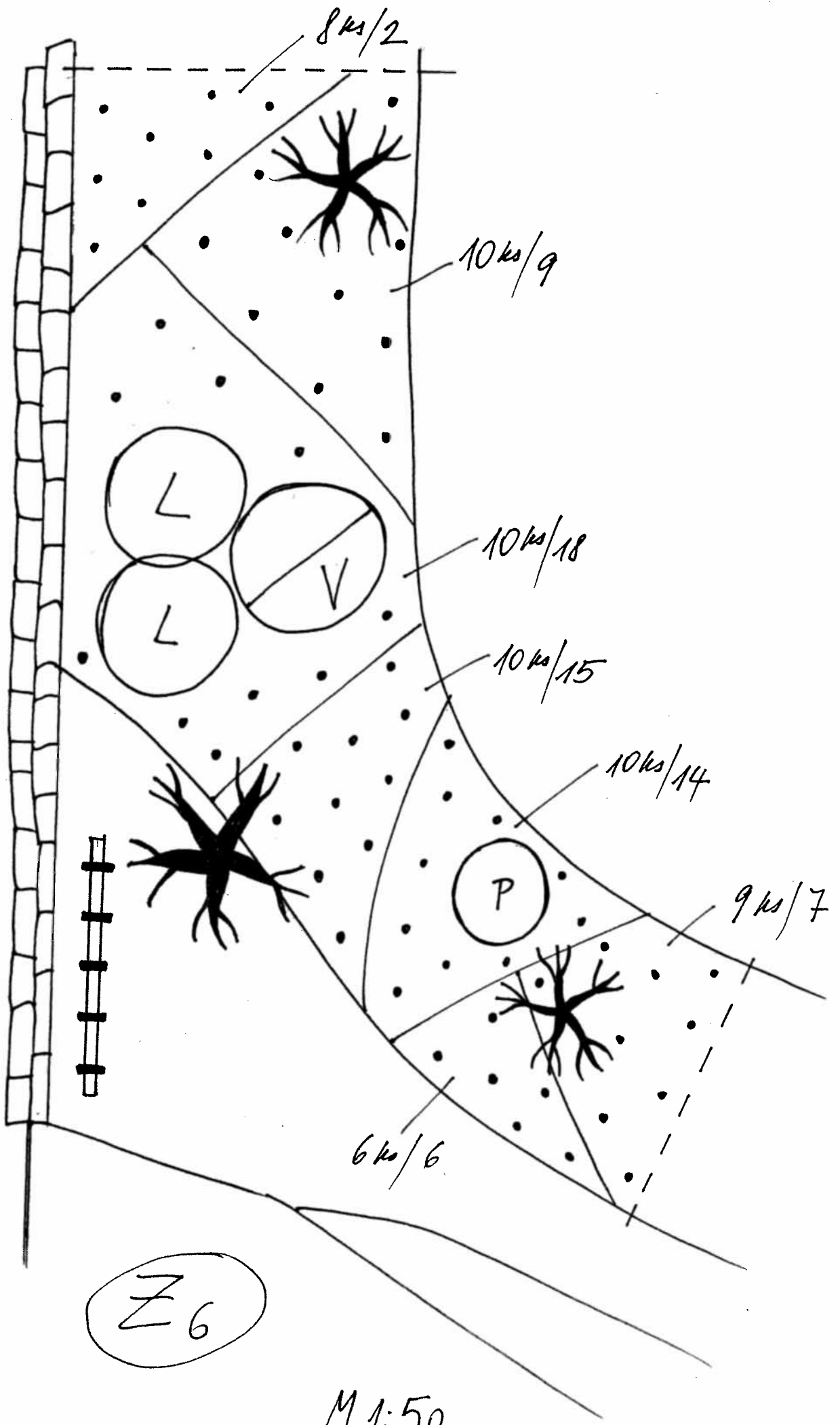


Osazovací plán - trvalky

M 1:50







LEGENDA GRFICKÁ:



jehličnan



listnatý strom



listnatý keř



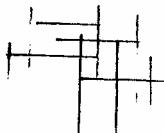
trvalky, trávy, kapradiny



popínavá rostlina



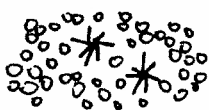
půdopokryvná rostlina



kamenná dlažba (kostky)



nášlapy



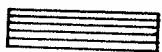
oblázky s trvalkami



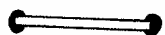
kamenná zídka



osvětlení



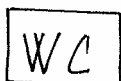
lavičky



informační tabule



rozvodná skříň el. Napětí



chemické WC



mobilní nádoby



vstupy



stojan na kola



patky pod geo vzorky

SEZNAM ROSTLINNÉHO MATERIÁLU:

STROMY LISTNATÉ

- A *Acer platanoides* 'Crimson King' vk, ok 12-14cm dbal
- B *Prunus padus* 150-200cm, kont
- C *Amelanchier grandiflorus* vk, ok 10-12cm prost nebo dbal
- D *Tilia cordata* 'Greenspire' vk, ok 12-14cm dbal

KEŘE LISTNATÉ

- E *Cornus alba* 'Aurea' 30-40cm, kont
- F *Cornus alba* 'Kesselringii' 30-40cm, kont
- G *Coryllus maxima* 'Purpurea' 100-150cm, kont
- H *Cotoneaster horizontalis* 'Robustus' 30-40cm, kont
- I *Cotoneaster radicans* 'Eichholz' 30-40cm, kont
- J *Euonymus fortunei* 'Emerald'n gold' 15-20cm, kont
- K *Forsythia x intermedia* 'Spectabilis' 30-40cm, kont
- L *Hydrangea arborescens* 'Anabelle' 30-40cm, kont
- M *Philadelphus virginalis* 30-40cm, kont
- N *Salix integra* 'Pendula' 30-40cm, kont
- O *Spiraea japonica* 'Goldflame' 30-40cm, kont
- P *Spiraea nipponica* 30-40cm, kont
- Q *Stephanandra incisa* 30-40cm, kont
- R *Viburnum opulus* 30-40cm, kont

POPÍNAVÉ ROSTLINY

- S *Hedera helix* 20-30, kont
- T *Hydrangea petiolaris* 30-40cm, kont

KEŘE JEHLIČNATÉ

- U *Juniperus conferta* 'Schlager' 30-40cm, kont
- V *Juniperus media* 'Old Gold' 60-80cm, kont nebo dbal
- W *Picea abies* 'Formánek' vk 60cm, 40-50cm, bal
- X *Taxus baccata* 'Kordes' 100-125cm, PS, dbal
- Y *Juniperus horizontalis* cv. 30-40cm, kont

OVOCNÉ KEŘE

- Z *Amelanchier alnifolia* 40-60, kont

PŮVODNÍ STROMY

- I. *Betula pendula*
- II. *Tilia* sp.
- III. *Acer pseudoplatanus*
- IV. *Chamaecyparis* sp.

TRVALKY, TRAVINY, KAPRADINY, CIBULOVINY

Trvalky:

- 1 *Aster dumosus* 'Mittelmeer'
- 2 *Bergenia x hybrida* cv.
- 3 *Epimedium youngianum* 'Niveum'
- 4 *Geranium x cantabrigiense* 'Cambridge'
- 5 *Geranium macrorhizum* 'Spessart'
- 6 *Hemerocalis x hybrida* cv.
- 7 *Heuchera brizoides* cv.
- 8 *Hosta* cv.
- 9 *Iris sibirica* 'Ego'
- 10 *Lamium galeobdolon*
- 11 *Lupinus x hybridus* cv.
- 12 *Nepeta fassenii* 'Six Hills Giants'
- 13 *Salvia nemorosa* 'Viola Klossé'
- 14 *Waldsteinia ternata*
- 15 *Vinca minor* cv.

Traviny:

- 16 *Miscanthus sinensis* 'Graziella'

Kapradiny:

- 17 *Osmunda regalis*
- 18 *Matteucia struthiopteris*

Cibuloviny:

- 19 *Narcissus* sp.